



Quarry rehabilitation

## Quarry rehabilitation in a maritime setting



*A new fish farm created seven new jobs.*

**A disused quarry located near the coast has been restored as a nature park and fish farm.**

### OBJECTIVE

To rehabilitate a former island quarry on a coastline designated as an Area of Outstanding Natural Beauty.

### CONTEXT

Dinmor Parc Quarry, located on the Isle of Anglesey off the coast of North Wales, was mined until the early 1980s. Stone was shipped by sea, which required the construction of a large pier and related facilities that severely marred the natural beauty of the coastal scenery. Lafarge Aggregates became responsible for the site through a series of business acquisitions after the closure of the quarry, and decided to restore it.

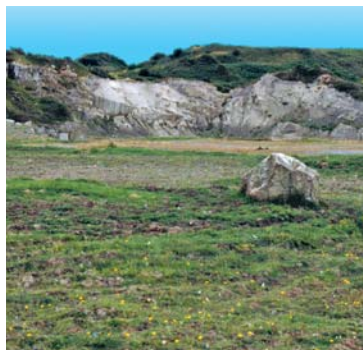
### SOLUTION

Several landscape transformations were made, including removal of the pier and sea-loading facilities and contouring of the cutting faces. Foreshore stabilization systems were put in place to counter wave erosion. To offset the lack of topsoil, the quarry floor has been covered with crushed stone to promote the growth of new vegetation. In addition to restoring the quarry to a more

natural appearance, a fish farm has been set up to stimulate the local economy.

### RESULTS

The project successfully restored a natural appearance to the site. The fish farm created seven jobs and produced 200 tons of turbot in its first year of operation. The goal is to attain an annual production level of 1,000 tons of fish and create an additional sixteen jobs.



*Dinmor Parc Quarry has been rehabilitated as a nature park (foreshore stabilization).*

**Location:**  
• Lafarge Aggregates, Isle of Anglesey.